



LEISURE



# DINOSAUR ISLE



## NARRATIVE

Dinosaur Isle is an all-year-round facility, combining entertainment, education and enjoyment. Displays use clever lighting, artwork, sound, smells and animatronic technology to create an exciting experience. As well as the displays, there is a working laboratory on view, and a room set aside for learning sessions.

Full disabled access is available, and the facility has a large shop. Browns cafeteria is immediately next door to the site.

We are located next to the sandy beach at Sandown, within a short distance of the excellent geological exposures at Yaverland.

In August 2001 the purpose built interactive museum known as Dinosaur Isle was opened. Dinosaur Isle provides the space and facilities to properly display and conserve the rich geological collections.

Dinosaur Isle is managed by the Isle of Wight Council and cost £2.7 million, half of which was provided by a Millennium Commission grant. The new museum is located on Culver Parade, a short distance from the old building, and was designed by local architects Rainey Petrie Johns in the shape of a giant pterodactyl.

The Curatorial staff provide an identification service for Isle of Wight fossils, and provide a resource for the Planning Department where changes may affect important geological exposures; this service is backed by specialist knowledge, maintained by a continuing interest in the Island's geological heritage.

Dinosaur Isle works in partnership with other organizations to promote the conservation of the Island's rich geological and palaeontological diversity. This includes English Nature (Natural England), the National Trust, Isle of Wight Area of Outstanding Natural Beauty unit, I.W. Council Countryside Section and the Coastal Management Team.



NSI Gold Accredited  
Multi-Award Winning  
Innovative Technology  
30 Year Heritage  
Highest Standards



“Lifeline are proud to work with such amazing organisations as Dinosaur Isle”



## OUR RELATIONSHIP

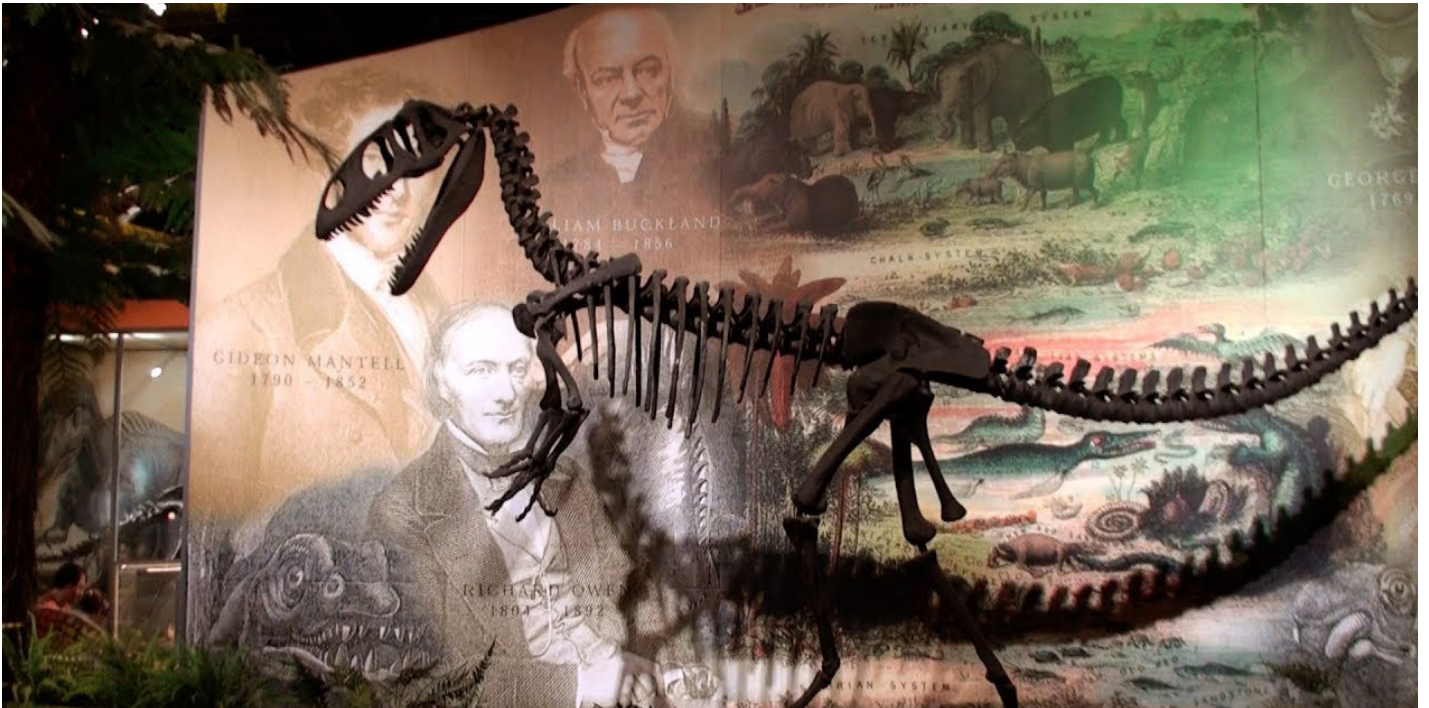
Isle of Wight Council offered out to tender opportunities to replace the Fire Detection and Alarm System at Dinosaur Isle, Sandown, Isle of Wight. Local Fire & Security specialists Lifeline were awarded the contract.

Tel: **01983 521621** Email: **info@lifeline-security.co.uk** **lifeline-security.co.uk**

The Island Security Centre, Riverway, Newport, Isle of Wight, PO30 5UX







### HOW LIFELINE HELPED

The museum required some minor works. The works included the replacement of the entire Fire Detection and Alarm System as well as the installation of a new high-level Air Sampling System. As the museum is a key visitor attraction closure of the facility had to be kept to an absolute minimum. This vital project was to be delivered in an extremely limited timescale to minimise the exposure to the museum and impact on visitors.

In less than two days, the Lifeline team were in and out of the building having completed the entire project to the clients' complete satisfaction.

Challenges were not only limited to the short timescale, but also working at heights, above priceless and irreplaceable displays and artefacts. Engineers used internal Spider Lifts as Mobile Elevation Platforms for works at high level.

Using industry leading manufactures Advanced Electronics, Apollo Fire Detectors and System Sensor Air Sampling Systems, the expert team delivered the final solution to the client with no disruption to planned operations.

Dinosaur Isle is now fully protected from fire due to the diligent and professional installation of protection systems from the Lifeline team. Lifeline have a proven track record and history to deliver projects large and small, with long or short turn around schedules.



### Lifeline: Protecting homes and businesses for over 30 years.

Working with you to look after your individual fire and security needs. Solutions available with 24 hour monitoring, remote viewing and control through smartphones and tablets, with Police, Fire & Keyholder response.



Tel: **01983 521621** Email: **info@lifeline-security.co.uk** **lifeline-security.co.uk**

The Island Security Centre, Riverway, Newport, Isle of Wight, PO30 5UX

